



PE-through terminal, Front installation, accessory for Load disconnecter 3LD3

Model	
product brand name	SETRON
product designation	PE through-type terminal
design of the product	accessories for 3LD3 switch disconnectors
AWG number as coded connectable conductor cross section	
<ul style="list-style-type: none"> • minimum • maximum 	14 6
tightening torque with screw-type terminals	
<ul style="list-style-type: none"> • minimum • maximum 	3 N·m 3 N·m
type of connectable conductor cross-sections for main contacts	
<ul style="list-style-type: none"> • finely stranded with core end processing • solid or stranded 	1x (2.515 mm ²) 1x (2.5 ... 16 mm ²)

Approvals Certificates		
General Product Approval	other	Environment

[Confirmation](#)



[Miscellaneous](#)

[Confirmation](#)

[Environmental Confirmations](#)

Environment

[Environmental Confirmations](#)

Further information

Information on the packaging

<https://support.industry.siemens.com/cs/ww/en/view/109813875>

Information- and Downloadcenter (Catalogs, Brochures,...)

<http://www.siemens.com/lowvoltage/catalogs>

Industry Mall (Online ordering system)

<https://mall.industry.siemens.com/mall/en/en/Catalog/product?mlfb=3LD9340-3B>

Service&Support (Manuals, Certificates, Characteristics, FAQs,...)

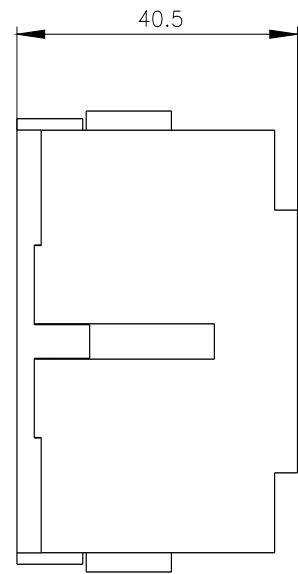
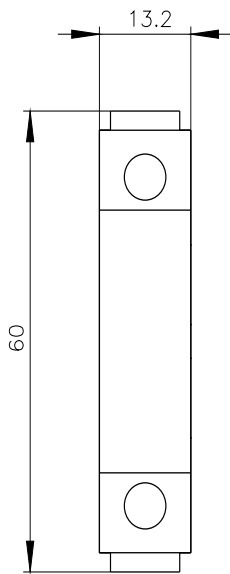
<https://support.industry.siemens.com/cs/ww/en/ps/3LD9340-3B>

Image database (product images, 2D dimension drawings, 3D models, device circuit diagrams, ...)

http://www.automation.siemens.com/bilddb/cax_en.aspx?mlfb=3LD9340-3B

CAx-Online-Generator

<http://www.siemens.com/cax>



last modified:

4/18/2024 

